

Multi-Position Mounted FASTIN-FASTON Housings

TE Connectivity (TE) introduces three-position housings on 7mm centerline for use with 250 series FASTIN-FASTON terminals. The multi-position mounted FASTIN-FASTON housings (MMF) are designed to improve ergonomics for workers. The housings have larger pressing surfaces, rounded edges and snag-free features. Unlike some competitive housings, the new TE housings meet customer demands for both UL 94 V-0 and GWT 750°C, no flame requirements. They are used on air conditioners and similar applications. The three-position housings speed up the assembly process, permitting three simultaneous connections, rather than three individual connections.

KEY FEATURES AND BENEFITS

- Meets GWT 750°C, no flame and UL 94 V-0
- Free hanging configuration
- Three positions on 7 mm centerline
- Housings accept crimp-type 250 series FASTIN-FASTON tabs and FASTON receptacles
- Tabs and receptacles accept 20-12 AWG wire
- Improve ergonomics for assembly workers
- Allows three connections to be made at once, potentially speeding up this step of assembly

APPLICATIONS

- Air Conditioners
- Other equipment requiring wire-to-wire power connections

BASIC PRODUCT DETAILS FOR ACCEPTABLE TERMINALS

- Plug housing (P/N 2297440-3) accepts 250 series (6.33 mm) FASTON crimp-type receptacles) P/N 170032-* or 170258-*) on wire
- Cap housing (P/N 2297438-3) accepts 250 series (6 x 0.88 mm) FASTIN-FASTON crimp-type tabs (P/N 170340-* or 170341-*) on wire

DESIGN-IN QUESTIONS:

1. Would you like to simplify your assembly process by allowing workers to make three connections at once?
2. Do you need a connector meeting the Glow Wire test requirements?
3. Would you like a latching connector with features to prevent the latch from snagging wires?
4. Do you need a connector capable of handling power level loads?

If the answers are “yes”, the new multi-position mounted FASTIN-FASTON housing could represent a great solution for the application.

Multi-Position Mounted FASTIN-FASTON Housings

Quick Reference Guide

MMF HOUSINGS, THREE POSITIONS

Part Number	Description
2297440-3	MMF, Free Hanging, Plug Housing
2297438-3	MMF, Free Hanging, Cap Housing

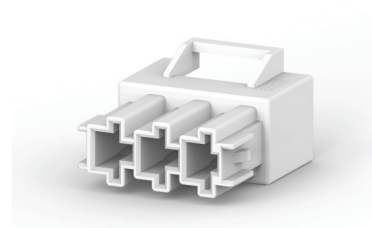
TERMINALS FOR USE WITH MMF PLUG HOUSING

Part Number	Description
170032-*	250 FASTON Receptacle, 20-14AWG
170258-*	250 FASTON Receptacle, 14-12AWG

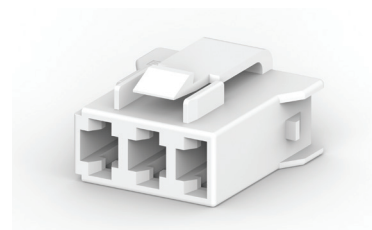
TERMINALS FOR USE WITH MMF CAP HOUSING

Part Number	Description
170340-*	250 FASTIN-FASTON Tab, 20-14AWG
170341-*	250 FASTIN-FASTON Tab, 14-12AWG

NOTE: Asterisk (*) in part numbers above denotes a suffix that varies depending upon options chosen.



2297438-3 Cap Housing



2297440-3 Plug Housing

TE TECHNICAL SUPPORT CENTER

USA: +1 (800) 522-6752

Canada: +1 (905) 475-6222

Mexico: +52 (0) 55-1106-0800

Latin/S. America +54 (0) 11-4733-2200

Germany: +49 (0) 6251-133-1999

UK: +44 (0) 800-267666

France: +33 (0) 1-3420-8686

Netherlands: +31 (0) 73-6246-999

China: +86 (0) 400-820-6015

te.com

FASTIN-FASTON, FASTON, TE, TE Connectivity, and TE Connectivity (logo) are trademarks. All other logos, products and/or company names referred to herein might be trademarks of their respective owners.

The information given herein, including drawings, illustrations and schematics which are intended for illustration purposes only, is believed to be reliable. However, TE Connectivity makes no warranties as to its accuracy or completeness and disclaims any liability in connection with its use. TE Connectivity's obligations shall only be as set forth in TE Connectivity's Standard Terms and Conditions of Sale for this product and in no case will TE Connectivity be liable for any incidental, indirect or consequential damages arising out of the sale, resale, use or misuse of the product. Users of TE Connectivity products should make their own evaluation to determine the suitability of each such product for the specific application.

© 2018 TE Connectivity Ltd. family of companies All Rights Reserved.

1-1773957-2

08/18

Original