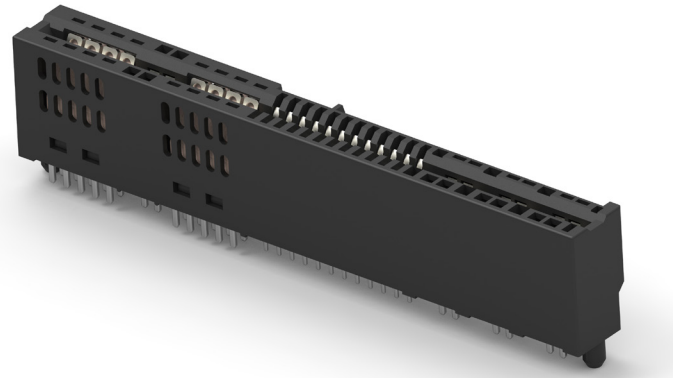


INTRODUCING HIGH DENSITY (HD)+ CARD EDGE POWER CONNECTORS

- Highest current density
- Low contact resistance
- Common PCB footprint



Our new high density (HD)+ card edge connector delivers the highest current density in the market at 15A/2.54mm and supports 2000-3000W power supplies for data center equipment.

A unique design with dual layers of DC power contacts and pass-through pins provide multiple mating/contact points to the PCB which helps ensure low contact resistance and supports higher current. The signal pitch is 1.27mm, which is compatible with common industry PCB footprint designs.

KEY BENEFITS

- Delivers the highest current density of any card edge connector in the market at 15A/2.54mm
- Supports 2000-3000W power supplies for data center equipment
- Unique dual layer design of DC power contacts and pass-through pins provides multiple mating/contact points to the PCB which helps ensure low contact resistance at 1 mΩ max
- Meets common industry PCB footprint designs with 1.27mm signal pitch, 5.08mm power contact pitch
- Provides lower temperature rising and lower power loss on the connector

LEARN MORE

[HD+ Card Edge Landing Page](#)

[HD+ Card Edge Product Flyer](#)

[HD+ Card Edge Product Video](#)

[HD+ Card Edge Parts List](#)

APPLICATIONS

- Servers
- Switches
- Storage devices

ELECTRICAL

- Voltage rating: 100V
- Current rating: 30A per contact (14 contacts total)
- Contact resistance: 0.4 milliohms initial

MECHANICAL

- 80N max. mating force (IEC 60512-13-1)
- 60N max. un-mating force (IEC 60512-13-1)

MATERIALS

- Contacts: High conductivity copper alloy
- Connector housing: Glass filled high temp thermoplastic

STANDARDS & SPECIFICATIONS

- 108-128060
- 501-128061