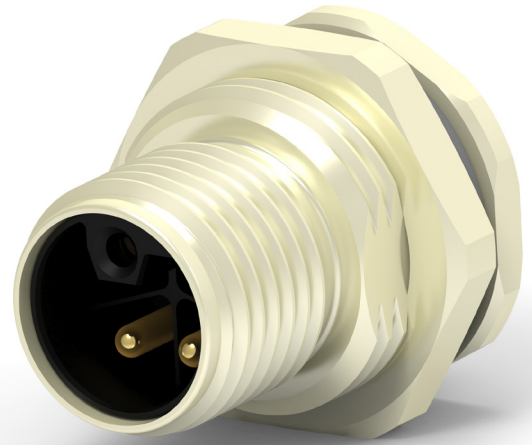


## INTRODUCING

# M12 POWER L-CODE PANEL MOUNT PCB CONNECTORS

- Provides four times the power of standard M12 connectors for compact high-power solution.
- PNO approved for immediate implementation into PROFINET standard and embracing miniaturization of distribution boxes



TE Connectivity (TE)'s new M12 Power L-Code connectors are designed for Panel Mount PCB applications and provide a compact solution for high-power connections in automation devices. An extension of TE's M12 product portfolio, they handle up to 16A per pin – the highest in TE's M12 family – delivering four times the power of standard M12 connectors while providing reliable and efficient power supply. M12 Power L-Coded connectors take up to 40% less space than 7/8" connectors traditionally used for high-power connections, allowing for a more compact build of a high-power solutions for automation devices.

TE's new M12 Power L-Code connectors are IP67 rated, protected from dust and resist temporary submersion in water at depths of up to 1 meter for 30 minutes. The power connectors are available through TE's global distribution network, which provides customers with short lead-times and fast responses for technical support. M12 Power L-Code connectors, an extension of the current M12 IEC standard, have been selected by PROFIBUS & PROFINET International as the standard for 24-volt power supply systems used in PROFINET devices.

### KEY BENEFITS

- Provides four times the power of standard M12 connectors for compact high-power solution.
- PNO approved for immediate implementation into PROFINET standard and embracing miniaturization of distribution boxes.
- Ideal for factory automation and use in harsh and wet industrial environments.

### FEATURES

- Handles currents: up to 16A per Pin
- Small form-factor using up to 40% less space than 7/8" connectors
- IP67 Sealed Interface when mated

### ELECTRICAL

- Rated Voltage: 63V (AC/DC)
- Rated Current: 16A per Pin

### MECHANICAL

- IP67 (When fully mated)
- Operating Temperature: -40°C to +85°C

### MATERIAL

- M12 Male Body: Copper Alloy
- M12 Male Housing: LCP
- Contact: Copper Alloy

### STANDARDS & SPECIFICATIONS

- Product Specification: [108-137350](#)
- Application Specification: [114-137144](#)
- UL\_E28476

### LEARN MORE

[M12 Power L-code Panel Mount PCB Connectors  
Flyer](#)

[M12 Power L-code Panel Mount PCB Connectors  
Parts list](#)

[wM12 Power L-code Panel Mount PCB Connectors  
Product Page](#)