

ECONOMY POWER 2.5 SURFACE MOUNT HEADERS

COMPACT PCB HEADERS SUPPORTING AUTOMATED ASSEMBLY

Economy Power 2.5 (EP 2.5) surface mount technology (SMT) headers are a solution for printed circuit board (PCB) manufacturers using automated assembly to build compact wire-to-board systems. The 2.5mm pitch EP 2.5 SMT headers are designed to support automated pick-and-place assembly and reflow soldering, allowing for more efficient PCB manufacturing, as compared to traditional through hole (T/H) headers. These UL and VDE certified headers can safely mate with existing EP 2.5 connectors and similar 2.5mm pitch products on the market. Applications for EP 2.5 SMT headers include low power and signal systems in home appliances, HVAC, industrial equipment, and lighting.

ELECTRICAL

- Maximum Current (A): 4.2
- Voltage Rating: 250V AC
- Operating Temperature (°C): -55 to +105

MECHANICAL

- Wire Sizes (AWG): 26-20
- Centerline (mm): 2.5
- Configuration: Single row, vertical, surface mount

STANDARDS & SPECIFICATIONS

- Product Specification: [108-2418](#)
- Application Specification: [114-13315](#)
- UL and VDE Certified
- UL 94 V-0
- IEC 60335-1 Glow Wire Test (GWT*)

FEATURES

- Surface mount technology (SMT) technology supports automatic pick-and-place assembly and reflow soldering
- Reduced risk of connection failure due to solder bridging, as compared to T/H headers
- Mates with existing EP 2.5 connectors and similar 2.5mm pitch products
- Materials meet UL 94 V-0 and IEC 60335-1 glow wire test (GWT*) flammability standards
- Connectors are UL and VDE certified

ADDITIONAL RESOURCES

For more information about the TE Connectivity Economy Power 2.5 connector offerings and compatible parts, please refer to these resources:

- [Economy Power 2.5 Connectors Product Webpage](#)
- [Economy Power 2.5 Connectors Quick Reference Guide](#)

APPLICATIONS



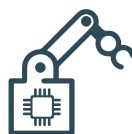
Appliances



Industrial equipment



HVAC



Automation equipment



Lighting



Automotive

*For more information on glow wire testing please review the white paper [Glow Wire Testing for the Appliance Industry](#) or visit the [Glow Wire Capable Connectors product page](#).

ECONOMY POWER 2.5 SURFACE MOUNT HEADERS

SURFACE MOUNT HEADERS

Number of Positions	Part Number	Flammability Rating
2P	2365497-2	UL 94 V-0 & GWT
3P	2365497-3	
4P	2365497-4	
5P	2365497-5	
6P	2365497-6	
7P	2365497-7	
8P	2365497-8	
9P	2365497-9	
10P	1-2365497-0	

te.com

TE Connectivity, and TE connectivity (logo) are trademarks owned or licensed by the TE Connectivity Ltd. family of companies. All other logos, products and/or company names referred to herein might be trademarks of their respective owners.

While TE has made every reasonable effort to ensure the accuracy of the information in this brochure, TE does not guarantee that it is error-free, nor does TE make any other representation, warranty or guarantee that the information is accurate, correct, reliable or current. TE reserves the right to make any adjustments to the information contained herein at any time without notice. TE expressly disclaims all implied warranties regarding the information contained herein, including, but not limited to, any implied warranties of merchantability or fitness for a particular purpose. The dimensions in this catalog are for reference purposes only and are subject to change without notice. Specifications are subject to change without notice. Consult TE for the latest dimensions and design specifications.

© 2023 TE Connectivity. All Rights Reserved.

04/23